

PRODUCT DATA SHEET

Fiber Optic Terminal Box

Description

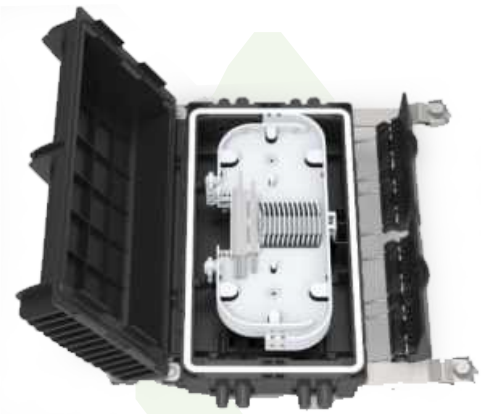
This OTB is a fiber optic terminal box that has two side doors for loading fiber optic splitter & fiber optic adapter, fiber splicing and fiber distribution. It is outdoor aerial handed application.

Features:

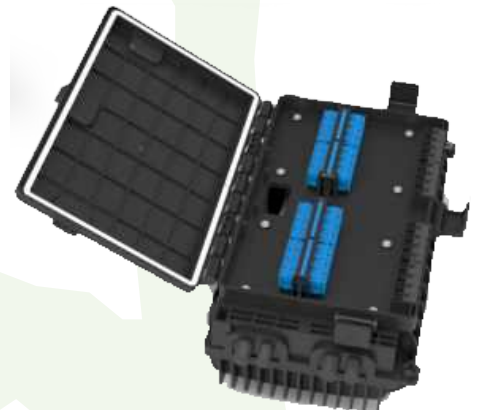
- Material: High quality ABS plastic.
- Max.48 fibers, 2pcs splice tray.
- Can load 16pcs SC simplex adapter.
- Can load PLC 2x1:8 or 1:16 steel tube type splitter.
- 8pcs cable ports(4pcs Φ14mm, 4pcs Φ10mm), 16pcs drop cable port for entry & exit.
- Waterproof, outdoor aerial hanged, IP66.
- Two doors: A side door for fiber splicing, B side door for cable management.

Application

- FTTH access network.
- Telecommunication networks.
- CATV networks.
- Data communications networks.



(A side door)

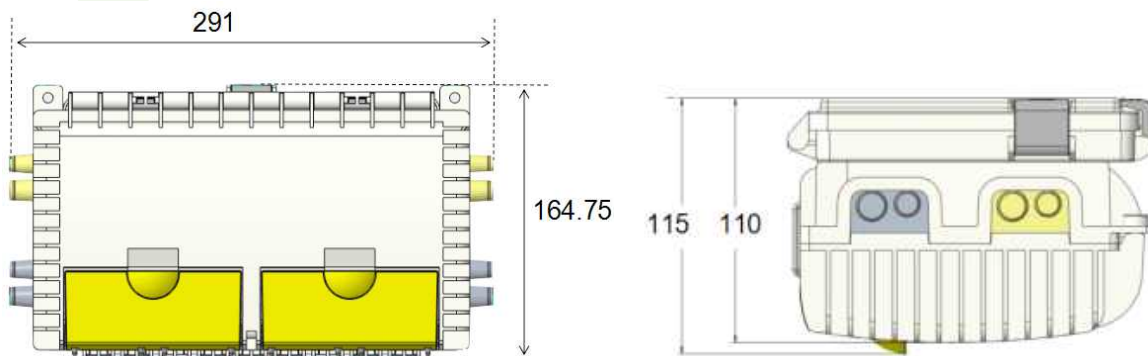


(B side door)

Specification:

Model	Splicing Capacity	Dimension	Adapter port
NT-OTB-08P16DX-A	48 fibers	165x291x115 mm	Max. 16pcs SC simplex adapters

Dimension: (mm)



More pictures:

