

# Nitrotel Enterprise Copper Solution

Structured cabling is a standardized approach to designing and installing a cabling system that provides a reliable and flexible infrastructure for enterprise networks. It supports various hardware uses and is suitable for today's requirements and those of the future.

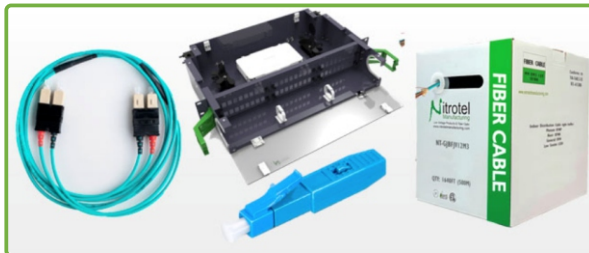
## CABINETS AND ENCLOSURES



## COPPER SYSTEM



## FIBER OPTICS SYSTEMS



## OUTDOOR CABLING SYSTEMS



## ACCESSORIES



## CABLE ADMINISTRATION



## PRODUCT DATA SHEET

## CATEGORY 6A SOLUTION

### Cable U/UTP Cat 6A

#### Features

- Meets or exceeds requirements of ANSI/TIA-568.2-D
- Category 6A and ISO 11801 2nd Edition Class EA channel standards.
- Meets or exceeds requirements of IEC 61156-5
- Category 6A component standards.
- Meets requirements of IEEE 802.3af and IEEE 802.3at for PoE+ or PoE++ applications.
- Third party tested to comply with ANSI/TIA/EIA-568.2-D
- Descending length cable markings enable easy identification of remaining cable which reduces installation time and cable scrap.
- Color Availability: Additional cable colors available.
- UL and ETL Verified.

#### Ordering Information

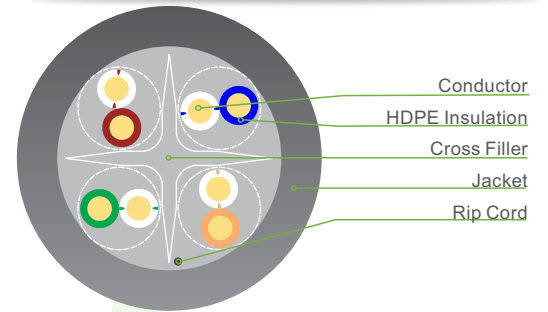
NTNC6A -



Jacket Color

BU	RD
GY	BK
WH	YL
GN	PR

Item	Outer Jacket	Overall diameter(mm)
P	CMP	6.4±0.2
C	CM	6.4±0.2
R	CMR	6.4±0.2
L	LSZH	6.4±0.2



#### Conductor

Conductor	Solid Bare Annealed Copper 23AWG
Insulation	HDPE
Total number of insulated conductors	8, twisted in 4 pairs
Color code	White-Blue/Blue, White-Orange/Orange White-Green/Green, White-Brown/Brown
Individual pair shield	None
Overall shield	None
Drain wire	None

### Cable F/UTP Cat 6A

#### Features

- Meets or exceeds requirements of ANSI/TIA-568.2-D
- Category 6A and ISO 11801 2nd Edition Class EA channel standards.
- Meets or exceeds requirements of IEC 61156-5
- Category 6A component standards.
- Meets requirements of IEEE 802.3af and IEEE 802.3at for PoE+ or PoE++ applications.
- Third party tested to comply with ANSI/TIA/EIA-568.2-D
- Descending length cable markings enable easy identification of remaining cable which reduces installation time and cable scrap.
- UL and ETL Verified

#### Ordering Information

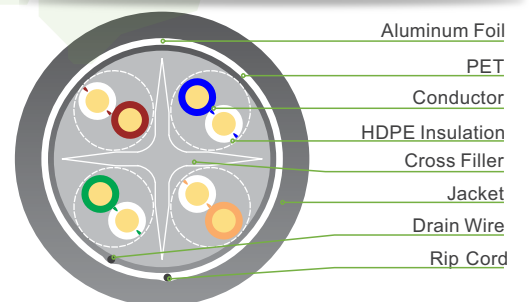
NTNC6A FTP-



Jacket Color

BU	RD
GY	BK
WH	YL
GN	PR

Item	Outer Jacket	Overall diameter(mm)
P	CMP	7.6±0.2
C	CM	7.6±0.2
BLANK	CMR	7.6±0.2
L	LSZH	7.6±0.2
E	LDPE	7.6±0.2



#### Conductor

Conductor	Solid Bare Copper 23AWG
Insulation	HDPE
Total number of insulated conductors	8, twisted in 4 pairs
Color code	blue x white, orange x white, green x white, brown x white
Individual pair shield	None
Overall shield	Aluminum foil, providing 100% coverage, foil face out.
Drain wire	Tinned copper

## Keystone Jack Unshielded Cat 6A

### Features

- Backward compatible.
- Compliant with EIA/TIA-568.2-D Cat6A connecting hardware specifications.
- PoE standards: IEEE 802.3af, 802.3at, 802.3bt, UPoE, and Supports
- Power over HDBaseT™ (PoH) up to 100 watts
- Dual-color coded labeling made for both 568A & 568B wiring schemes.
- Compact slim design fits into any conventional face plate, outlet box, or panel.
- UL-certified.
- Patented Printed Circuit Board designed to meet Cat6A performances.
- Insertion life: 750 cycles minimum.
- 50u" gold plated contacts.

### Ordering Information

NTKJ6A SL

Color

BU	RD	WH	YL
GY	BK	GN	OR

Special orders available upon request.



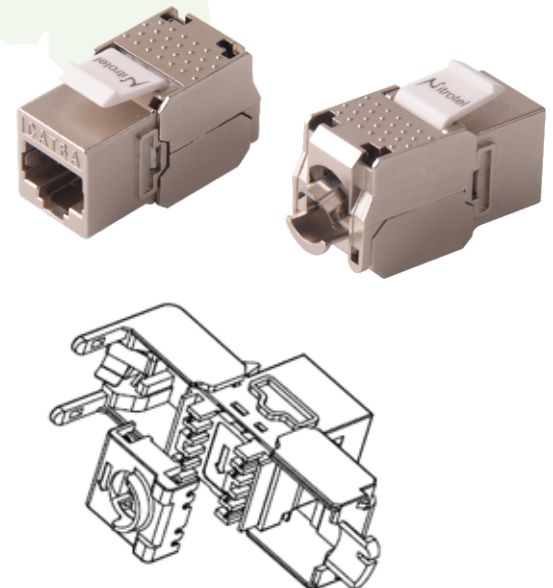
## Keystone Jack Shielded Cat 6A

### Features

- Backward compatible
- Compliant with EIA/TIA-568.2-D Cat6A connecting hardware specifications.
- UL-certified.
- Patented Printed Circuit Board designed to meet Cat6A performances.
- Insertion life: 750 cycles minimum.
- 50u" gold plated contacts.
- Robust die-cast housing.
- 270 wide-angle hinge provides easy access and termination.
- Toolless design. No punchdown tool required; snaps closed when termination is complete.
- Compatible with S/FTP, F/UTP, U/FTP and other common shielded cable types.

### Ordering Information

NTKJ6ASHSL



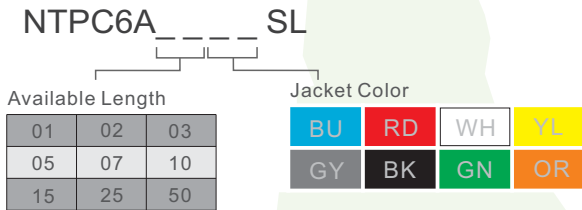
## Patch Cords U/UTP Cat 6A

### Features

- Electrical performance guaranteed to meet or exceed ANSI/TIA-568.2-D Category 6A and ISO/EIC specifications.
- PoE Compliance: Supports IEEE 802.3f/ 802.3at /802.3bt at PoE++ applications.
- 10GBASE-T Ethernet
- Independently tested and verified UL and ETL.
- Ideal for Data center architectural requirements.
- Stranded cable for maximum flexibility.
- Available with different color of cable and different length



### Ordering Information



Special orders available upon request.

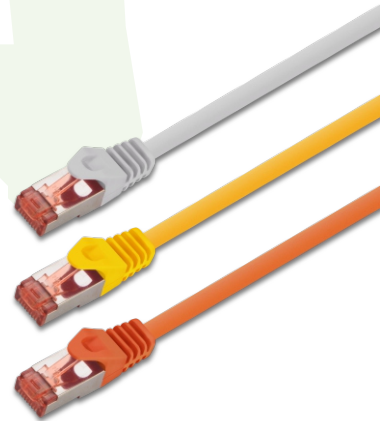
### Conductor

Conductor	Stranded Bare Copper 28 AWG
Insulation	HDPE
Total number of insulated conductors	8, twisted in 4 pairs
Color code	White-Blue/Blue, White-Orange/Orange White-Green/Green, White-Brown/Brown
Individual pair shield	None
Overall shield	None
Drain wire	None

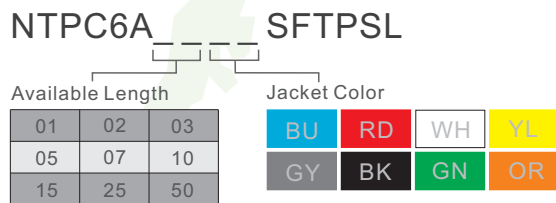
## Patch Cords S/FTP Cat 6A

### Features

- Electrical performance guaranteed to meet or exceed ANSI/TIA-568.2-D Category 6A and ISO/EIC specifications.
- PoE Compliance: Supports IEEE 802.3f/ 802.3at /802.3bt at PoE++ applications.
- 10GBASE-T Ethernet
- Independently tested and verified UL and ETL.
- Ideal for Data center architectural requirements.
- Stranded cable for maximum flexibility.
- Available with different color of cable and different length.



### Ordering Information



Special orders available upon request.

### Conductor

Conductor	Standed bare copper 26AWG
Insulation	PE(Foam-Skin)
Total number of insulated conductors	8, twisted in 4 pairs
Color code	blue x white, orange x white, green x white, brown x white
Individual pair shield	aluminum foil, providing 100% coverage, foil face out
Overall shield	Tinned copper braid
Drain wire	None



## Patch Cords U/UTP Cat 6A

### Features

- Standard density 1U 24-port, 2U 48-port.
- Exclusive crisscross design provides maximum alien crosstalk protection.
- Convenient rear cable management bar to facilitate proper bend radius of cables.
- Compatible with industry-standard 19" racks.
- Universal T568A/568B wiring labels for 110-style IDC termination.

### Mechanical

1. Housing Material: PBT
2. Panel Frameme: Carbon Steel, Powder coating in blanck color

### Ordering Information

24 Ports: NTPP6A24U

48 ports: NTPP6A48U



## Patch-Panel Modular (Unloaded)

### Features

- 24 or 48 ports, UTP or FTP blank patch panel for use with Cat. 6A, 6 or Cat.5e keystone jacks
- Cable management bar includes
- 19" Standard Rack Mount
- Exclusive design for maximum alien crosstalk suppression.

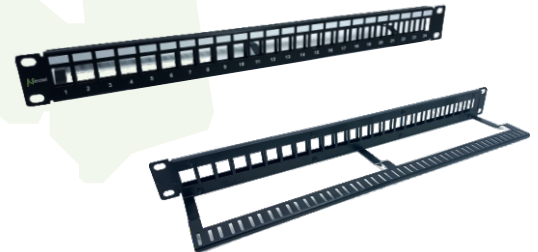
### Order Information

24 Ports UTP: NTBP24U

48 ports UTP: NTBP48U

24 Ports FTP: NTBP24USH

48 ports FTP: NTBP48USH





CATEGORY 6 SOLUTION

Cable U/UTP Premium Cable Cat 6

**Features**

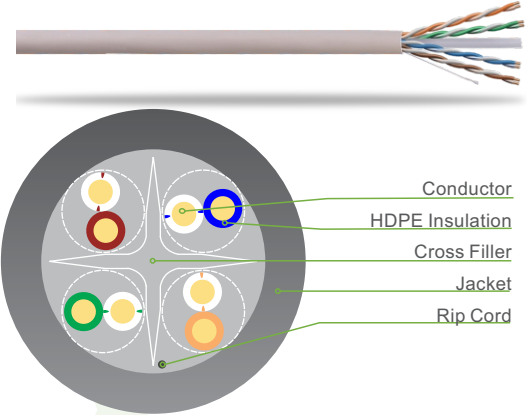
- Exceeds requirements of ANSI/TIA-568.2-D
- Tested at 550 Mhz
- Category 6 and ISO 11801 2nd Edition Class E channel standards.
- Cross filler and 23AWG Solid 4PR UTP,
- Meets requirements of IEEE 802.3af and IEEE 802.3at for PoE+ or PoE++ applications.
- Third party tested to comply with ANSI/TIA/EIA-568.2-D
- UL and ETL Verified.

**Ordering Information**

NTNC6E -



Jacket Color	Item	Outer Jacket	Overall diameter(mm)
BU RD	P	CMP	6.4±0.2
GY BK	C	CM	6.4±0.2
WH YL	R	CMR	6.4±0.2
GN PR	L	LSZH	6.4±0.2



**Conductor**

Conductor	Solid Bare Annealed Copper 23AWG
Insulation	HDPE
Total number of insulated conductors	8, twisted in 4 pairs
Color code	White-Blue/Blue, White-Orange/Orange, White-Green/Green, White-Brown/Brown
Individual pair shield	None
Overall shield	None
Drain wire	None

Cable U/UTP Cat 6

**Features**

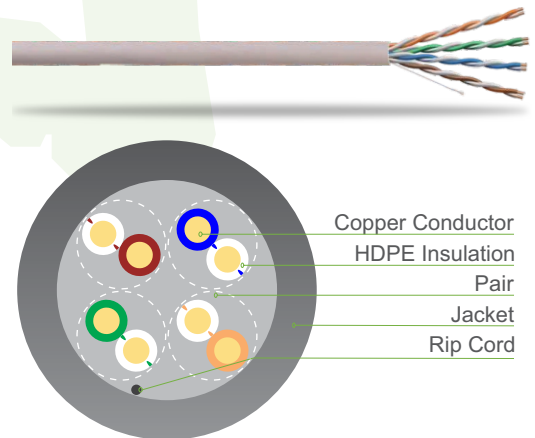
- Meets or exceeds requirements of ANSI/TIA-568.2-D
- Category 6 and ISO 11801 2nd Edition Class E channel standards.
- Meets or exceeds requirements of IEC 61156-5
- Meets requirements of IEEE 802.3af and IEEE 802.3at for PoE+ or PoE++ applications.
- Third party tested to comply with ANSI/TIA/EIA-568.2-D
- Descending length cable markings enable easy identification of remaining cable which reduces installation time and cable scrap.
- UL and ETL Verified

**Ordering Information**

NTNC6 -



Jacket Color	Item	Outer Jacket	Overall diameter(mm)
BU RD	P	CMP	5.8±0.2
GY BK	C	CM	5.8±0.2
WH YL	R	CMR	5.8±0.2
GN PR	L	LSZH	5.8±0.2



**Conductor**

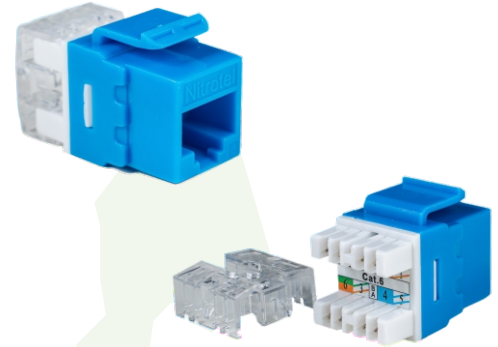
Conductor	Solid Bare Copper 24AWG
Insulation	HDPE
Total number of insulated conductors	8, twisted in 4 pairs
Color code	White-Blue/Blue, White-Orange/Orange, White-Green/Green, White-Brown/Brown
Individual pair shield	None
Overall shield	None
Drain wire	None



## Keystone Jack Unshielded Cat6

### Features

- Backward compatible
- Compliant with EIA/TIA-568.2-D Cat6 connecting hardware specifications
- PoE Compliance: Supports IEEE 802.3f/ 802.3at /802.3bt at PoE++ applications and Supports Power over HDBaseT™ (PoH) up to 100 watts
- Dual-color coded labeling made for both 568A & 568B
- Compact slim design fits into any conventional face plate, outlet box, or panel
- Patented Printed Circuit Board designed to meet Cat6 performances
- Utilizes 180 degree industry standard 110 termination style
- 50u" gold plated contacts.
- Enhanced IDC termination towers reduce installation time and increased performance



### Ordering Information

NTKJ1806E SL

Color

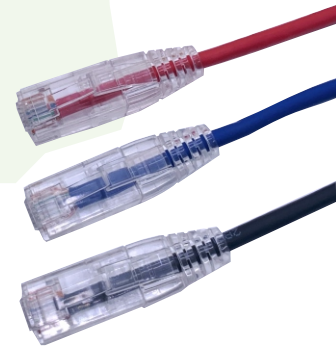
BU	RD	WH	YL
GY	BK	GN	OR

Special orders available upon request.

## Patch Cords U/UTP Cat 6

### Features

- Electrical performance guaranteed to meet or exceed
- ANSI/TIA-568.2-D Category 6 and ISO/EIC specifications.
- PoE Compliance: Supports IEEE 802.3f/ 802.3at /802.3bt at PoE++ applications.
- Independently tested and verified UL and (ETL).
- Ideal for Data center architectural requirements.
- Stranded cable for maximum flexibility.
- Available with different color of cable and different length..



### Order Information

NTPC6E SL

01	02	03
05	07	10
15	17	25
33	50	66
98		

Jacket Color

BU	RD	WH	YL
GY	BK	GN	OR

### Conductor

Conductor	Stranded Bare Copper 28AWG
Insulation	HDPE
Total number of insulated conductors	8, twisted in 4 pairs
Color code	White-Blue/Blue, White-Orange/Orange White-Green/Green, White-Brown/Brown
Individual pair shield	None
Overall shield	None
Drain wire	None



## Patch-Panel Unshielded Cat 6

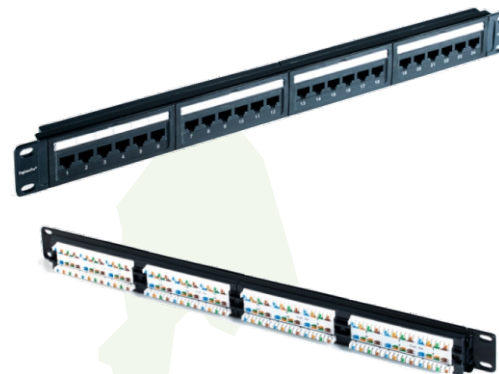
### Features

- Standard density 1U 24-port, 2U 48-port.
- Include silk-screened port numbers and paper label holders.
- Include color code labels for T568A and B.
- Utilizes industry standard termination 110 style Termination punchdown.
- Mounts to the front or rear of any standard EIA 19" spaced rack.
- Convenient rear cable management bar to facilitate proper bend radius of cables.

### Ordering Information

24 Ports: NTPPC624U

48 ports: NTPPC648U





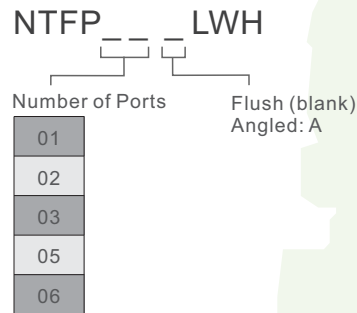
INFRASTRUCTURE OF SUPPORT

Face Plate

**Features**

- 1/2/3/4/6 ports available.
- White color (other under request)
- Dimensions: 101.6 x 50.8mm (4x2")
- Jack flush plate: Convenient icons for easy identification of voice or data applications.
- Jack Angled Plate: Jack in 45 degrees and 2 labels with plastic covers

**Ordering Information**



Surface Mount Box

**Features**

- Service ID icons
- Cable can be installed from the sides or base of the box
- The boxes shall mount with screws or adhesive tape (included)
- Supplied in easy tear polybags
- Ingenious spring-loaded integral shutter protects

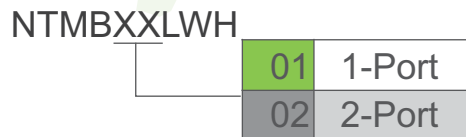
**Construction**

Plastic: ABS  
Color: White

**Dimensions**

1-Port= 2.5in H x 2.0in W x 0.1in D (65mm x 48.2mm x 27mm)  
2-Port= 2.5in H x 3.0in W x 0.1in D (65mm x 76.0mm x 27mm)

**Ordering Information**



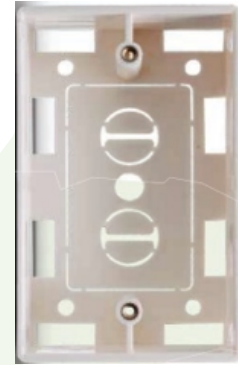
## Face Plate

### Features

- Size: 115\*72\*35(mm)
- Material: ABS. Color White

### Ordering Information

Item	Description	Size
NTMB24	Mounting Box	115*72*35mm



## Nitro Wrap

### Features

- At least 200 re-fastenings.
- Available in black (other colors upon request)
- Stocked in Rolls of 3 / 4" width x 30 ft long (option 75')
- You can easily cut it to length desired.

### Order Information

NTNW-30HLB



## Vertical Cable Manager

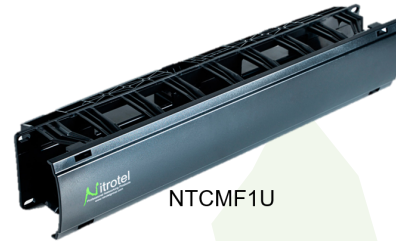
### Features

- Dimensions 2U: 4" (W) x 4" (D)
- Color: Black ABS Plastic
- Hinged for easy cable administration

### Order Information

NTCMFXU(S)

01	1-Port
02	2-Port



## Patch Cords U/UTP Cat 6

### Features

- Standard for installation in open racks TIA-310
- Color: Black ABS Plastic

### Ordering Information

Model	Height	Section Width x Depth	Format
NTCMFV35SX	35" (890mm)	3.75 x 3.15" (95x80mm)	Simplex
NTCMFV35SSX	35" (890mm)	4.2 x 4.2" (107x107mm)	Simplex
NTCMFV35DX	35" (890mm)	4 x 4" (102x102mm)	Duplex
NTCMFV71DX	71" (1803mm)	4 x 4" (102x102mm)	Duplex



### EZ Termination Tool

#### Features

- Simultaneous termination of eight twisted-pair conductors including excess trimming
- Comfortable plastic handle grips lightweight and compact
- Integrated lock allows tool to be stowed while not in use

#### Order Information

NTKJEZTT



### Cable Stripper for twisted pair and coaxial

#### Features

- SFrom UTP or FTP Cat3 to cat6A cables
- Coaxial RG-58/59/6/8/11
- Dimensions: 13.97 x 9.04 x 2.84 cm; 91 Grs
- High strength ABS Plastic

#### Ordering Information

NTST300



### 110 Impact Punch Down Tool

#### Features

- Spring loaded impact style termination seats and cuts wires with less effort  
Users can select either the HI or LO setting on the tool
- Cushioned end cap and body grip helps to absorb impact
- forces and reduces operator fatigue

#### Order Information

NTPDT26



### Base for easy termination Keystone Jack

#### Features

- Works with 180 and 90 degrees Nitrotel Keystone Jacks
- High resistant quality ABS material
- For impact tools or non-impact tools

#### Order Information

NTG704

